

ICD-10 Validations in eTHOMAS

This document will detail:

- The requirements for ICD-10 input
- The built-in validation for ICD-10 code entry
- eTHOMAS validation messages

Facts to know about ICD-10 Codes

- ICD-10 codes begin with an alpha character
 - Except for U, this is not a leading character in any ICD-10 code
- The second digit is numeric
- ICD-10 codes are between 3-7 characters in length
- A decimal is used after the 3rd character
- Character X is used as a 5th character placeholder in certain 6 character codes to allow for future expansion.
 - Example: T46.1X5A – Adverse effect of calcium channel blocks, initial encounter
 - Example: T15.02XD –Foreign body in cornea, left eye, subsequent encounter

Information from <http://www.cms.gov/Medicare/Coding/ICD-10/downloads/ICD-10QuickRefer.pdf>

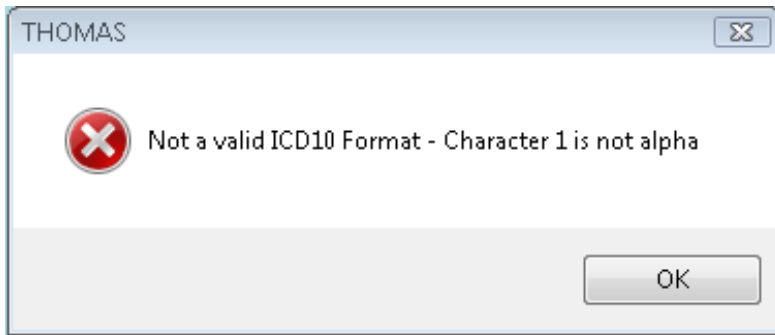
Validations used in eTHOMAS when adding an ICD-10 code

eTHOMAS has specific validations built into the program to assist users with key code entry. If the code does not meet the requirements the user will be presented with a prompt to correct the code. Here is an example of an actual ICD-10 Code entered into THOMAS using the correct format.

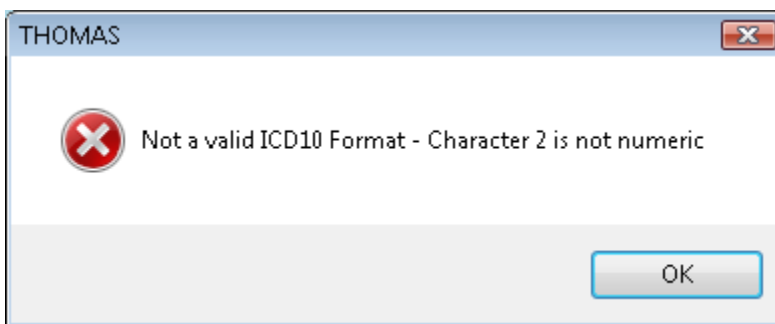
The screenshot shows the 'Diagnostic Codes' window in eTHOMAS. The 'Key Code' field contains 'T51.0X1D'. The 'Dx Type' dropdown is set to 'I'. The 'Description' field shows 'TOXIC EFFECT OF ETHANOL, ACCIDENTAL (UNINTENTIONAL), SUBS'. Below this, there are fields for 'ICD-9 Code', 'Blue Cross', 'Medicare', and 'Medicaid'. To the right, the 'ICD-10 Code' field contains 'T51.0X1D'. At the bottom, there are 'Effective' and 'Expiration' date fields. The window has a standard Windows-style title bar and a toolbar with icons for adding, deleting, and saving.

- The first character must be an alpha character
- The second position must be numeric
- If a decimal is present, it must be after the 3rd character/number
- The 1st character cannot be a U

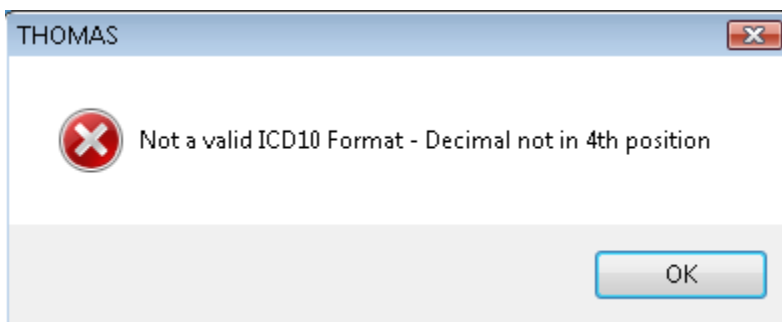
Listed are the various validation messages that will pop up when the ICD-10 code does not meet the criteria required.



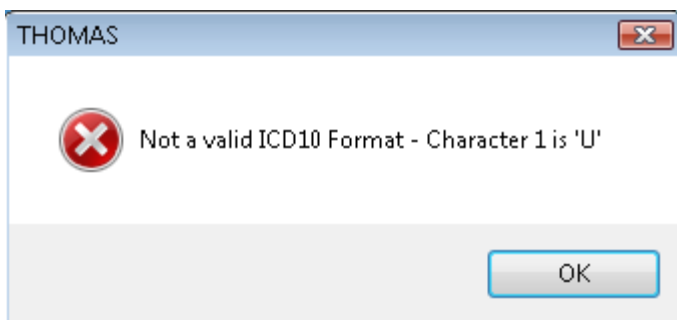
The first character must be an alpha character and not a U. Make the necessary changes in the ICD-10 box within the diagnosis code.



The second position must be numeric. Make the necessary changes in the ICD-10 box within the diagnosis code.



If a decimal is present, it must be after the 3rd character/number. Make the necessary changes in the ICD-10 box within the diagnosis code.



The 1st character cannot be a U. Make the necessary changes in the ICD-10 box within the diagnosis code.